



# DP SERIES

## Dryer

---

200 - 250  
pound capacities



# DP Series

Professional High Efficiency Dryers for General Laundry Applications and Medium Sized On-Premise Laundries Including Hotel/Motel, Healthcare, Athletics, and Dry Cleaning Plants.

## Outstanding Reliability and Efficiency at an Affordable Price

The DP Series is designed to be effortless and powerful while maintaining low cost of ownership:

- ◆ Low initial investment
- ◆ Fewer parts means less downtime
- ◆ Fast dry with higher heat output and higher airflow
- ◆ Easy installation
- ◆ Long lasting
- ◆ Low maintenance

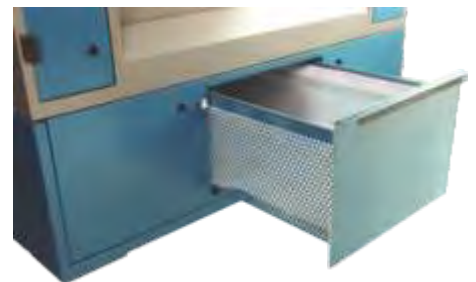


### The M720 Advanced Microprocessor Control

- ◆ Easy to use
- ◆ 100 programs
- ◆ Trouble-free
- ◆ Advanced diagnostic ability
- ◆ Optional humidity sensing / Autodry
- ◆ Large easy to read display

### Large Lint Drawer

- ◆ Easy to clean and maintain
- ◆ Large area means high efficiency
- ◆ Located close to the exhaust fan
- ◆ Airflow monitored by the microprocessor





### Large, Strong Door

- ◆ Opens 180 degrees
- ◆ Gasket free to reduce maintenance
- ◆ Service free magnetic latch
- ◆ Safe and simple door opening switch

---

### Energy Efficient Insulated Construction

- ◆ Fully enclosed cabinet
- ◆ Energy saving insulation
- ◆ Quiet operation
- ◆ Welded steel cabinet
- ◆ Advanced anti-corrosion coating



### Rugged Drive System Built to Last

- ◆ Fully enclosed fan cooled motors
- ◆ Cast iron pulleys
- ◆ Heavy duty steel base
- ◆ Reversing standard
- ◆ Many voltages available
- ◆ Stainless steel drying cylinder

---

### Steam or Gas Heating

- ◆ Fast dry with superior heat input and airflow
- ◆ High efficiency design no matter the heat type
- ◆ Robust construction
- ◆ Smooth and even heating
- ◆ Damper system on steam models



The DP Series from B&C Technologies: Reliable, Durable, Affordable

# Specifications

| MODEL                                  |        |         | DP-200 |         | DP-250 |         |
|--|--------|---------|--------|---------|--------|---------|
|  | Metric | US      |        |         |        |         |
| Maximum Capacity                       | lbs    | kg      | 200    | 91      | 250    | 114     |
| <b>Overall Dimensions</b>              |        |         |        |         |        |         |
| A - Width                              | inch   | mm      | 65     | 1651    | 65     | 1651    |
| B - Depth                              | inch   | mm      | 79.19  | 2011    | 84     | 2134    |
| C - Height (max)                       | inch   | mm      | 101    | 2565    | 101    | 2565    |
| <b>Drying Cylinder Information</b>     |        |         |        |         |        |         |
| Diameter                               | inch   | mm      | 59     | 1499    | 59     | 1499    |
| Depth                                  | inch   | mm      | 46.85  | 1190    | 48.82  | 1240    |
| Volume                                 | cu ft  | liters  | 75     | 2123    | 77     | 2180    |
| <b>Door</b>                            |        |         |        |         |        |         |
| Door Opening Diameter                  | in     | mm      | 35.43  | 900     | 35.43  | 900     |
| Height to Bottom of Door               | in     | mm      | 31.75  | 806     | 31.75  | 806     |
| <b>Gas Heating</b>                     |        |         |        |         |        |         |
| Air Flow                               | CFM    | cmm     | 5300   | 150     | 5800   | 164     |
| Heat Input                             | BTU/hr | kcal/hr | 760000 | 190000  | 950000 | 237500  |
| Gas Inlet                              | Inch   | mm      | 1      | 25.4    | 1      | 25.4    |
| Air Outlet                             | inch   | mm      | 20     | 508     | 20     | 508     |
| <b>Electrical Requirements</b>         |        |         |        |         |        |         |
| 208-230V, 50/60Hz, 3PH                 | Amp    | Breaker | 34     | 80      | 39     | 80      |
| 380-460V, 50/60Hz, 3PH                 | Amp    | Breaker | 15     | 40      | 18     | 40      |
| <b>Steam Heating</b>                   |        |         |        |         |        |         |
| Air Flow                               | CFM    | cmm     | 6500   | 184     | 7000   | 198     |
| Steam Consumption                      | BHP    | kW      | 27     | 264.9   | 32     | 313.9   |
| Operating Pressure                     | psi    | bar     | 80-125 | 5.5-8.6 | 80-125 | 5.5-8.6 |
| Steam Supply                           | inch   | mm      | 2      | 51      | 2      | 51      |
| Air Outlet                             | inch   | mm      | 20     | 508     | 20     | 508     |
| <b>Electrical Requirements</b>         |        |         |        |         |        |         |
| 208-230V, 50/60Hz, 3PH                 | Amp    | Breaker | 34     | 80      | 39     | 80      |
| 380-460V, 50/60Hz, 3PH                 | Amp    | Breaker | 15     | 40      | 18     | 40      |
| <b>Weight and Shipping Information</b> |        |         |        |         |        |         |
| Net Weight                             | lb     | kg      | 2535   | 1149    | 2885   | 1308    |
| Shipping Weight                        | lb     | kg      | 2600   | 1181    | 2950   | 1341    |

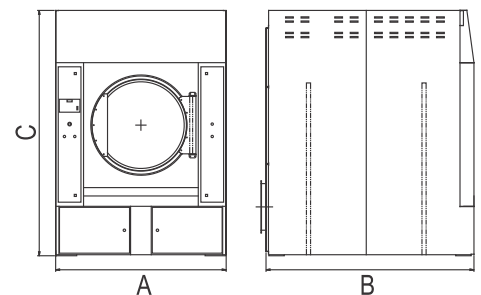
## Standard Features:

- Microprocessor control
- Reversing cylinder
- Heavy duty drive system
- Large door opening
- Cool down
- Overload protection
- High limit safety thermostats
- Soft start
- Stainless steel cylinder
- Rotation sensor

## Optional Features:

- Variable frequency drive
- Steam heating
- Gas heating
- Air recirculating system
- Stainless steel front
- Fire suppression system
- Automatic blower cleaning
- Humidity Sensing / Autody
- Tilt forward for unloading

Specifications and design subject to change without notice  
Additional options: Consult factory



B&C Technologies 1250 West 17th Street Panama City, Florida 32405

Phone: 850-249-2222 Fax: 850-249-2226

Web: [www.bandctech.com](http://www.bandctech.com) Email: [sales@bandctech.com](mailto:sales@bandctech.com)